

# Monolithic crystal filter

## MQF21.4-3000/11



### Application

- 8 pol filter
- i.f.- filter
- use in mobile and stationary transceivers

### Limiting values

		Unit	Value
Center frequency	$f_0$	MHz	21.4
Insertion loss		dB	$\leq 3.5$
Pass band at 3.0 dB		kHz	$\pm 15.00$
Ripple in pass band	$f_0 \pm 12.00$ kHz	dB	$\leq 2.0$
Stop band attenuation	$f_0 \pm 35$ kHz	dB	$\geq 70$
	$f_0 \pm 50$ kHz	dB	$> 90$
Alternate attenuation	$f_0 \pm 50 \dots 500$ kHz	dB	$> 90$ except spurious

### Terminating impedance Z

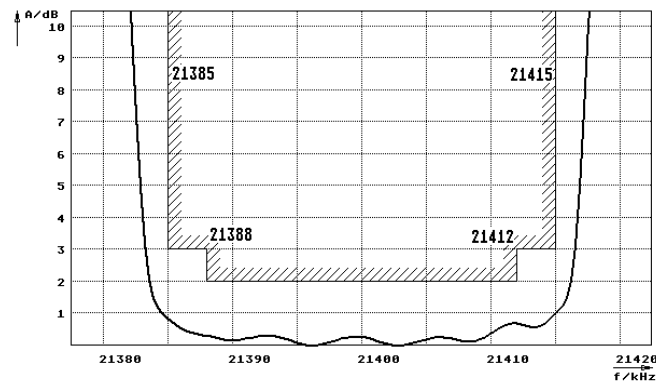
R1    C1	Ohm/pF	2000    0
R2    C2	Ohm/pF	2000    0

### Operating temp. range

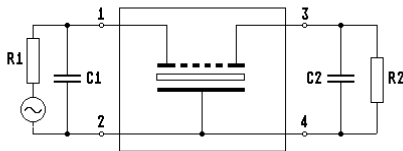
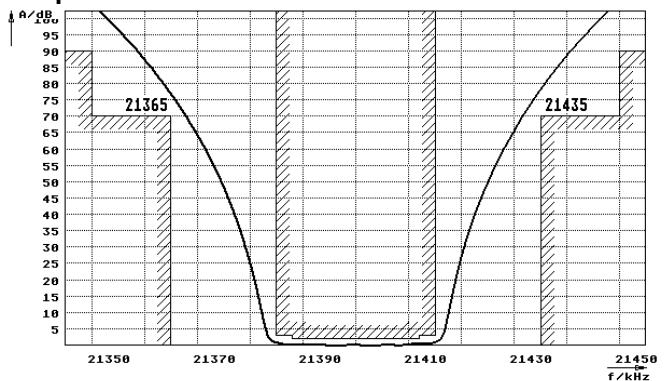
° C -20... +70

### Characteristics MQF21.4-3000/11

#### Pass band



#### Stop band



- Pin connections:
- 1 Input
  - 2 Ground-Input
  - 3 Output
  - 4 Ground-Output

